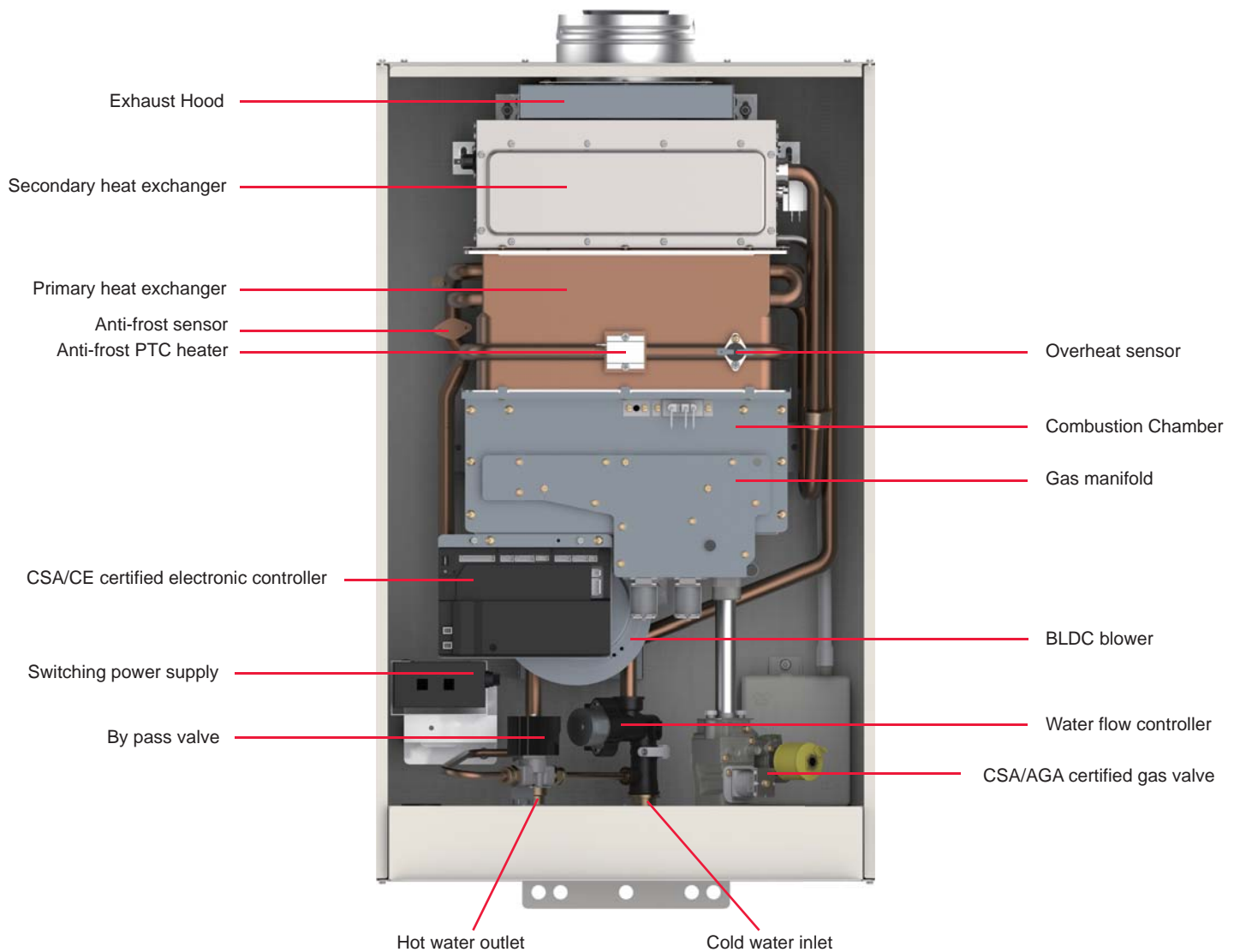


Technology and design  
with **Comfort** and  
**Energy Saving** in mind

**enerMAX** Instantaneous Gas Water Heater Series

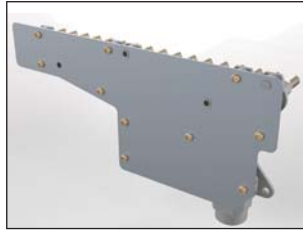




## Key components



Combustion chamber



Gas manifold



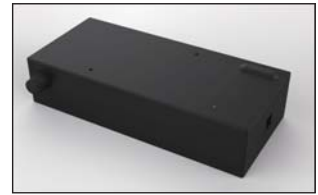
Water flow controller



CSA/CE certified electronic controller



Secondary heat exchanger



Switching power supply



Primary heat exchanger



CSA/AGA certified gas valve

## Rigorous and continuously improving quality system

- AGA certified
- Water Mark certified
- Energy Label
- CSA certified
- Energy Star certified
- ISO 9001 TUV certified
- ISO 17025 Lab TAF certified
- CSA Lab certified





## Power Line Series

- Indoor model & outdoor model
- LCD control panel
- By pass valve
- Step motor water flow controller
- 2 bathrooms







### P21i Operation Interface

- A. On / Program Key
- B. Reset Key
- C. Off Key
- D. Up Key
- E. Mode Key
- F. Down Key



### P21e Operation Interface

- A. Up Key
- B. Down Key
- C. Temp. Unit
- D. On / Off Key

Specification			P21e	P21i
Gas Inlet Pressure Min. / Max.	NG	kPa	0.98 / 2.55	0.98 / 2.55
	ULPG	kPa	1.96 / 3.92	1.96 / 3.92
Gas Rate Min./Max.	NG	Mj/hr	13.5 / 160	13.5 / 160
	ULPG	Mj/hr	13.5 / 160	13.5 / 160
Water Pressure	Min.	kPa	20	20
	Max.	kPa	1,000	1,000
Factory Default Temp.		°C	50 or 55	50 or 55
Min. Starting Flow Rate		l/min	3	3
Efficiency			84.20%	85.7%
Energy Label Rating			5.9 star	5.8 star
Temp. Range		°C	36~75	36~75
Switching Power Supply		Volt / Hz	230~240V / 50 & 60Hz	230~240V / 50 & 60Hz
Blower Fan Motor Type			BLDC Motor	BLDC Motor
Electricity Consumption		Amp	0.27	0.27
Installation			Outdoor	Indoor
Direct Electronic Ignition			V	V
Housing Dimension	Height	mm	653	653
	Width	mm	458	458
	Depth	mm	254	292
Net Weight		kg	24	24
Flue Type /Material: SUS 304			X(outdoor unit)	Coaxial Flue
Flue Diameter		mm	X(outdoor unit)	76 / 127
Color			White	White
Certificate			AGA, CSA, Water Mark	AGA, CSA, Water Mark

### Product Features

- Gas valve CSA certified
- Electronic control system CSA/CE certified
- Digital electrical ignition
- LED control panel
- Error code system
- Module design--easy maintenance
- Self-diagnostics
- Precision thermostatic control  $\pm 1^{\circ}\text{C}$
- Oxygen free copper heat exchanger
- Max. temp. hot water delivery: 50/55/60/75°C
- By pass valve
- Domestic & Commercial applications are available
- Cascade application is available

### Safety Functions

- Anti-frost detection
- Flame out detection
- Over voltage detection
- Abnormal water pressure detection
- Multiple safety temp. detection
- Over heat detection
- Power failure detection
- Block flue detection
- BLDC blower degradation detection
- Anti-frost detection  $< 2^{\circ}\text{C}$  on,  $> 10^{\circ}\text{C}$  off



## AQUA Line Series

- Outdoor model
- LCD display panel
- By pass valve
- Step motor water flow controller
- 3 bathrooms





### Operation Interface

- A. Up Key
- B. Down Key
- C. Temp. Unit
- D. On / Off Key

Specification			AQUA28e
Gas Inlet Pressure Min. / Max.	NG	kPa	0.98 / 2.55
	ULPG	kPa	1.96 / 3.92
Gas Rate Min./Max.	NG	Mj/hr	13.5 / 200
	ULPG	Mj/hr	13.5 / 200
Water Pressure	Min.	kPa	20
	Max.	kPa	1,000
Factory Default Temp.		°C	50 or 55
Min. Starting Flow Rate		l/min	3
Efficiency			84.80%
Energy Label Rating			5.6 star
Temp. Range		°C	36~75
Switching Power Supply		Volt / Hz	230~240V / 50 & 60Hz
Blower Fan Motor Type			BLDC Motor
Electricity Consumption		Amp	0.32
Installation			Outdoor
Direct Electronic Ignition			V
Housing Dimension	Height	mm	653
	Width	mm	458
	Depth	mm	261
Net Weight		kg	27
Flue Type /Material: SUS 304			X(outdoor unit)
Flue Diameter		mm	X(outdoor unit)
Color			White
Certificate			AGA, CSA, Water Mark

### Product Features

- Gas valve CSA certified
- Electronic control system CSA/CE certified
- Digital electrical ignition
- **LCD control panel**
- Error code system
- Module design - easy maintenance
- Self-diagnostics
- Precision thermostatic control +/-1°C
- Oxygen free copper heat exchanger
- Max. temp. hot water delivery: 50/55/60/75°C
- **By pass valve**
- **Step motor water flow controller**
- **Commercial and domestic models available**
- **Cascade application available**

### Safety Functions

- **Anti-frost detection** <2°C on, >10°C off
- Flame out detection
- Over voltage detection
- Abnormal water pressure detection
- Multiple safety temp. detection
- Over heat detection
- Power failure detection
- Block flue detection
- BLDC blower degradation detection



## ECO Line Series

- **Condensing tech**
- Indoor/Outdoor models
- LCD display panel
- By pass valve
- Step motor water flow controller
- 3~4 bathrooms







### ECO30i Operation Interface

- A. On / Program Key
- B. Reset Key
- C. Off Key
- D. Up Key
- E. Mode Key
- F. Down Key



### ECO30e Operation Interface

- A. Up Key
- B. Down Key
- C. Temp. Unit
- D. On / Off Key

Specification			ECO30e	ECO30i
Gas Inlet Pressure Min. / Max.	NG	kPa	0.98 / 2.55	0.98 / 2.55
	Propane	kPa	1.96 / 3.92	1.96 / 3.92
Gas Rate Min./Max.	NG	Mj/hr	13.5 / 200	13.5 / 200
	Propane	Mj/hr	13.5 / 200	13.5 / 200
Water Pressure	Min.	kPa	20	20
	Max.	kPa	1,000	1,000
Factory Default Temp.		°C	50 or 55	50 or 55
Min. Starting Flow Rate		l/min	3	3
Efficiency			95.4%	95.9%
Energy Label Rating			6.5 star*	6.6 star*
Temp. Range		°C	36~75	36~75
Switching Power Supply		Volt / Hz	230~240V / 50 & 60Hz	230~240V / 50 & 60Hz
Blower Fan Motor Type			BLDC Motor	BLDC Motor
Electricity Consumption		Amp	0.32	0.32
Installation			Outdoor	Indoor
Direct Electronic Ignition			V	V
Housing Dimension	Height	mm	753	753
	Width	mm	458	458
	Depth	mm	261	299
Net Weight		kg	32	32
Flue Type /Material: SUS 304			X(outdoor unit)	Coaxial Flue
Flue Diameter		mm	X(outdoor unit)	76 / 127
Color			White	White
Certificate			AGA, CSA, Water Mark	AGA, CSA, Water Mark

### Product Features

- Condensing tech (high efficiency)
- Gas valve CSA certified
- Electronic control system CSA/CE certified
- Digital electrical ignition
- LCD control panel
- Error code system
- Module design--easy maintainance
- Self-diagnostics
- Precision thermostatic control +/-1°C
- Oxygen free copper heat exchanger
- By pass valve
- Step motor water flow controller
- Commercial and domestic models available
- Max. temp. hot water delivery: 50/55/60/75°C
- Cascade application available

### Safety Functions

- Anti-frost detection <2°C on, >10°C off
- Flame out detection
- Over voltage detection
- Abnormal water pressure detection
- Multiple safety temp. detection
- Over heat detection
- Power failure detection
- Block flue detection
- BLDC blower degradation detection

\* Independently calculated using Australian Standard AS4552. AS4552 limits the rating shown on the energy label to 6.0 Stars. Where the calculated rating of the appliances exceeds 6.0 Stars it is designated as an "equivalent" rating.



### Operation Interface

- A. Up Key
- B. Down Key
- C. Temp. Unit
- D. On / Off Key

Specification			ECO24e
Gas Inlet Pressure Min. / Max.	NG	kPa	0.98 / 2.55
	ULPG	kPa	1.96 / 3.92
Gas Rate Min./Max.	NG	Mj/hr	13.5 / 160
	ULPG	Mj/hr	13.5 / 160
Water Pressure	Min.	kPa	20
	Max.	kPa	1,000
Factory Default Temp.		°C	50 or 55
Min. Starting Flow Rate		l/min	3
Efficiency			96.50%
Energy Label Rating			6.6 star*
Temp. Range		°C	36~75
Switching Power Supply		Volt / Hz	230~240V / 50 & 60Hz
Blower Fan Motor Type			BLDC Motor
Electricity Consumption		Amp	0.32
Installation			Outdoor
Direct Electronic Ignition			V
Housing Dimension	Height	mm	753
	Width	mm	458
	Depth	mm	261
Net Weight		kg	32
Flue Type /Material: SUS 304			X(outdoor unit)
Flue Diameter		mm	X(outdoor unit)
Color			White
Certificate			AGA, CSA, Water Mark

### Product Features

- Condensing tech (high efficiency)
- Gas valve CSA certified
- Electronic control system CSA certified
- Digital electrical ignition
- LCD control panel
- Error code system
- Module design--easy maintainance
- Self-diagnostics
- Precision thermostatic control +/-1°C
- Oxygen free copper heat exchanger
- By pass valve
- Step motor water flow controller
- Commercial and domestic models available
- Multiple connection available

### Safety Functions

- Anti-frost detection <2°C on, >10°C off
- Flame out detection
- Over voltage detection
- Abnormal water pressure detection
- Multiple safety temp. detection
- Over heat detection
- Power failure detection
- Block flue detection
- BLDC blower degradation detection
- Wind resistance (CSA standard)

\* Independently calculated using Australian Standard AS4552. AS4552 limits the rating shown on the energy label to 6.0 Stars. Where the calculated rating of the appliances exceeds 6.0 Stars it is designated as an "equivalent" rating.

## ENERGY SMART WATER PTY. LTD

T +61 3 9939 6722

W [www.esw.net.au](http://www.esw.net.au)

E [esw@esw.net.au](mailto:esw@esw.net.au)

